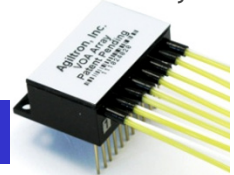


2~8 Channel MEMS VOA Array

Product Description

The MM Series VOA is based on a micro-electro-mechanical mechanism featuring compact design, simple construction, easy direct drive, and excellent optical performance. The MM series VOA is compliant with the Telcordia 1209 and 1221 reliability standards. The VOA is driven by directly applying an electrical voltage.



Performance Specifications

2~8 Channel MEMS VOA	Specification	Unit
Operating Wavelength	1310±50; 1550±50	nm
Insertion Loss ¹	≤ 0.8	dB
Attenuation Dynamic Range	> 30	dB
Polarization Dependant Loss (0-20dB)	0.2typ.; 0.5max.	dB
Wavelength Dependant Loss (40nm band, 0-20dB)	0.45typ.; 0.8max.	dB
Polarization Mode Dispersion	≤ 0.05	ps
Optical Cross Talk	≥ 65	dB
Attenuation Resolution	Continuous	dB
Response Time (0-20dB)	≤ 5	ms
Return Loss (Input / Output)	45min.	dB
Power Dissipation	40typ.	mW/Ch
Maximum Power Consumption ²	≤ 1	W
Electric Input (DC)	5	V
Operating Temperature	-5 ~ +75	°C
Storage Temperature	-40 ~ +85	°C
Optical Power Handling ³	≤ 250	mW/ch
Relative Humidity Range	0 ~ 85	%
Package Dimensions (see next page) ⁴	L25.4 x W15 x H10 Or L53.0×W30.0×H8.0	mm
<ol style="list-style-type: none"> 1 Without connector 2 Including control circuit 3 Total power<1W, otherwise need consider heat sink. 4 Customer may request smaller box for fewer channels. 		

Features

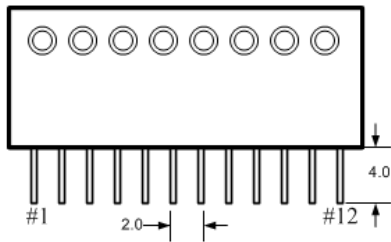
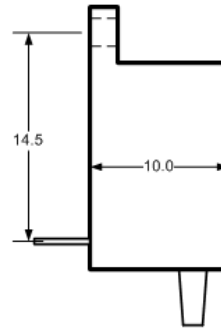
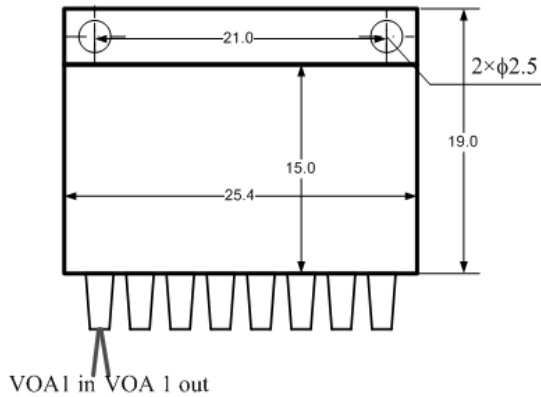
- Low Insertion Loss
- High Reliability
- Low Cost
- Low power consumption
- Super compact

Applications

- Dynamic gain equalization
- Variable MUX/DeMUX
- Instrumentation

2~8 Channel MEMS VOA Array

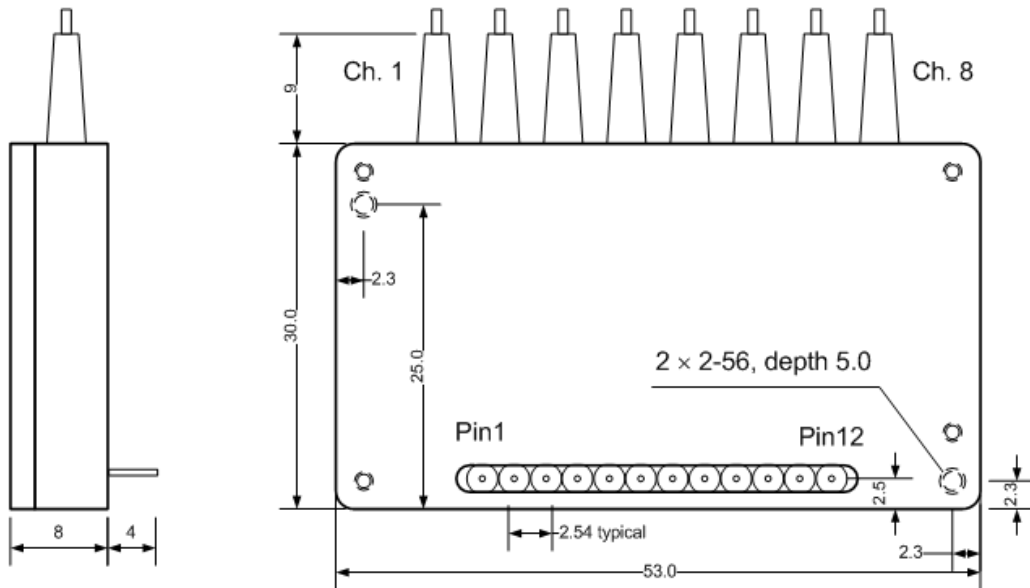
Mechanical Dimensions-Package Type 1



Pin 1	VOA 1 (0-5V)	Pin 7	VOA 5 (0-5V)
Pin 2	VOA 2 (0-5V)	Pin 8	VOA 6 (0-5V)
Pin 3	VOA 3 (0-5V)	Pin 9	VOA 7 (0-5V)
Pin 4	VOA 4 (0-5V)	Pin 10	VOA 8 (0-5V)
Pin 5	GND	Pin 11	GND
Pin 6	GND	Pin 12	5V power supply

2~8 Channel MEMS VOA Array

Mechanical Dimensions-Package Type 2



Pin 1	+5V PWR IN	Pin 7	VOA 5 (0-5V)
Pin 2	VOA 1 (0-5V)	Pin 8	GND
Pin 3	VOA 2 (0-5V)	Pin 9	VOA 6 (0-5V)
Pin 4	GND	Pin 10	VOA 7 (0-5V)
Pin 5	VOA 3 (0-5V)	Pin 11	GND
Pin 6	VOA 4 (0-5V)	Pin 12	VOA 8 (0-5V)

Ordering Information

VOAA-	Type	Wavelength	Off State	Package	Fiber	Fiber Length	Connector
<input type="checkbox"/> <input type="checkbox"/> <input type="checkbox"/> <input type="checkbox"/> <input type="checkbox"/> <input type="checkbox"/> <input type="checkbox"/> <input type="checkbox"/> <input type="checkbox"/>	8 channel =08 7 channel =07 6 channel =06 5 channel =05 4 channel =04 3 channel =03 2 channel =02	1310=3 1550 = 5 1260-1620= 8 Special = 0	Transparent=1 Opaque = 2	Type 1=1 Type 2=2 Special=0	SMF-28 =1 Special = 0 Bare fiber=1 900um loose tube=3 Special = 0	0.25m= 1 0.5m = 2 1.0m= 3 Special =0	None = 1 FC/PC = 2 FC/APC = 3 SC/PC = 4 SC/APC = 5 ST/PC = 6 LC = 7 Special = 0