

# PRODUCT BRIEF

# LEAD SULFIDE INFRARED (PbS) DETECTOR ARRAY (0.5 - 3 microns)

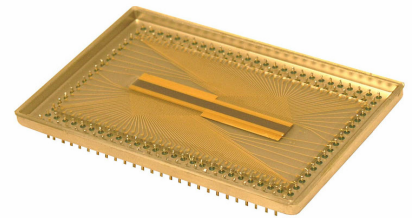
## Advantages

- New Automated Chemical Processing (ACP) produces higher yield at lower cost.
- Extremely high reliability under extreme conditions.
- Long shelf life.
- Hermetically sealed package to completely eliminate humidity attack on detection area.
- Wide range of electrical characteristics available.
- Wide range of sizes available.
- Immediate delivery.
- 100% tested.
- State of the art microelectronics fabrication capability.
- Specializing in high density arrays. 64/128 element, etc.

## Overview

Agiltron manufactures state-of-the-art lead sensitivity Sulfide (PbS) for room temperature operation as well as thermoelectrically cooled operation for spectroscopy from 0.5 to 3 microns. The linear arrays is with 128 element. The device can be supplied with integrated optical filters. It can be connected with pre-amplifiers or multiplexed amplifiers for applications. Thermoelectronic cooler and thermistor can be built in for temperature stabilization.

Listed below is typical 128 element electrical characteristics of PbS Array of Agiltron Automated Chemical Processing (ACP) detectors.



Parameter	Typical Performance
Operating Wavelength Range:	0.5 to 3 Microns (PbS)
Operating Temperature:	-4°C (TEC stabilized)
Number of Elements:	128 detector elements
Element Size:	Pixel width 230 microns, pixel height 2570 microns, and pixel pitch 320 microns
Peak Detectivity:	$D^*: 1 \times 10^{11} \text{ (cm/Hz}^{0.5}/\text{W}^{-1})$

## Mechanical Features

PbS Detector array is typically manufactured on quartz substrate. Devices can be supplied integrated with optical condenser elements, thermoelectric (TE) coolers, and processing electronics, all in a miniature package.

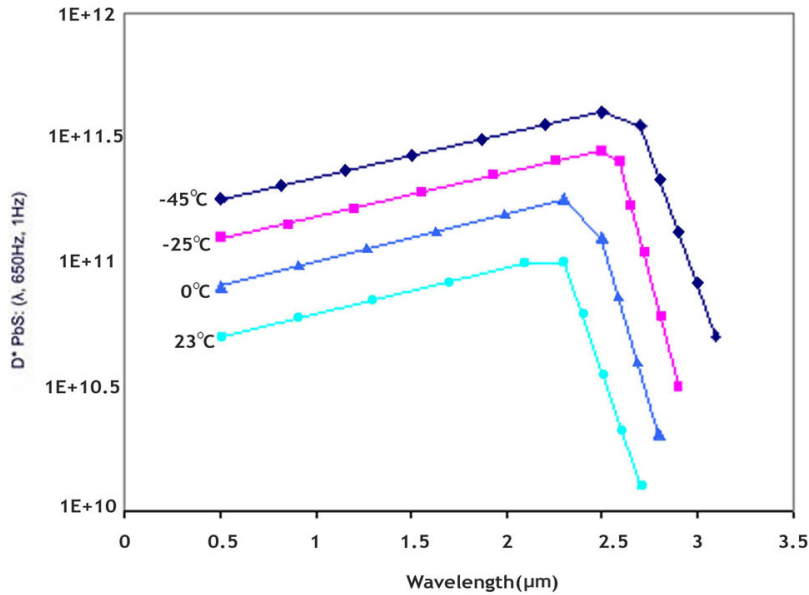
## Aging Characteristics

All stock detector arrays undergo a minimum four week aging period. Experience with detectors manufactured by the advanced process, including the above aging period, has shown the electrical characteristics to be stable to within 10% for over a year.



## Response of Detectors

The typical response for PbS operates in 0.5 to 3 micron spectral region with time constants below 2  $\mu$ sec. TE-cooled packages are available with a response in the 0.5 to 3 micron region with increased  $D^*$ . Typical spectral response of standard PbS detector is shown below.



## Ordering Information

<b>PBSA-</b>	<b>2</b>	<b>128</b>	<input type="checkbox"/> <input type="checkbox"/>	<input type="checkbox"/> <input type="checkbox"/> <input type="checkbox"/> <input type="checkbox"/> <input checked="" type="checkbox"/> <input type="checkbox"/> <input type="checkbox"/> <input type="checkbox"/> <input type="checkbox"/> <input type="checkbox"/> <input type="checkbox"/> <input type="checkbox"/>	<input type="checkbox"/> <input type="checkbox"/> <input type="checkbox"/> <input type="checkbox"/>
	<b>Material Type</b>	<b>Elements</b>	<b>Type</b>	<b>Element size: width×height (μm)</b>	<b>Pixel pitch (μm)</b>
	2=Lead Sulfide(PbS)		00=Special 10=Packaged	Example: 230μm×2570μm=0230x2570	Example: 320μm=0320



15 Cabot Rd,  
 Woburn, MA 01801  
 Tel: (781) 935-1200  
 Fax: (781) 935-2040  
 Email: sales@agiltron.com  
 www.agiltron.com